

**WROTHAM  
SCHOOL**

**A GREAT  
EDUCATION**



**Mr M Cater**  
**Headteacher**

# HIGH EXPECTATIONS CHALLENGE OPPORTUNITY

We believe that our students deserve to have the highest expectations made of them in everything they do.

As a comprehensive school we are committed to ensuring the most able students are challenged and stretched to achieve the highest grades, and that those students who need more support with their learning receive this from highly skilled teachers and other professionals.

At Wrotham School we do things differently.

We ask that preconceptions of non-selective education are left at the door.

The achievement of our students speaks for itself and highlights the high quality teaching and support that our students receive. Wrotham School offers a great education and shows that you can have success without selection. Our reputation and results have led to high demand for places at the school and we continue to grow whilst ensuring our core values are maintained.

As you will see from our online and printed publications, we offer a full and broad education that achieves both great academic performance and essential character development.

Our staff are passionate, high quality subject specialists who teach excellence through the engagement of students' naturally inquisitive nature.

We challenge our staff and students to ensure that what goes on in each classroom is of the highest level of challenge and with great success.

Character development and education sit at the core of our values. We believe that by developing good character in our students we allow them to develop wider life skills that will ultimately have a significant impact on their wellbeing and success in life. Students at Wrotham School are rewarded for showing good character and for participating in the wide range of extra-curricular and community events that we offer.

We are an honest and open school, we work with parents to resolve issues and improve. We do things differently and

we do not persist with outdated approaches to education or day to day business that are ineffective. We listen, evaluate and move forward with our communities' best interests at heart.

Our methodology and outcomes have recently received high praise from Ofsted (June 2019) and we welcome you to visit the school, to speak with our teachers, students and parents and see their pride and support for the work that we do.

We look forward to meeting you.

**Mr M Cater**



**HIGH**

# EXPECTATIONS

At Wrotham School we have high expectations of everything that we do and for everyone who is a part of our school community.

Wrotham is a place where success is celebrated and hard work is rewarded.

We want our students to be confident, hardworking and supportive of each other. We encourage everyone to make contributions to our school community and ethos.

***In 2017, Year 11 pupils attained the highest GCSE results for non-selective schools in Kent.***

***This confirms how well pupils are now challenged to tackle demanding work.***

Ofsted June 2018

# 97%

of parents feel their  
child is taught well

Ofsted Parent View Survey 2019





## FIRST CLASS EXPERIENCES

In order to nurture and inspire the development of resilient, well rounded individuals we work hard to offer a first class range of experiences and opportunities that build character, expertise, maturity and core life skills.

We encourage our students to reach beyond their comfort zones, to break through personal limitations and to experience the new and unknown.

Outside of the classroom this is encouraged through a range of trip, visits, and experiences.







## EXPERIENCES INCLUDE

Camps International Kenya Expedition  
& Fundraising (Years 9-13)

Carrotty Wood Outdoor Activities  
Week & Revision Weekends (Year 11)

Live Biking (Years 7-9)

Survival & Camping Evening (Year 7)

Berlin History Trip (Years 9-13)

Annual Ski Trip (All years)

Puzzle Club

School Choir

Science STEM Clubs

Geography Field Trips  
USA/ Dorset/ Amalfi Coast

BAE Systems Visits

Saracens Rugby Coaching

And many more...





## DUKE OF EDINBURGH'S AWARD

At Wrotham School we offer Bronze, Silver and Gold Duke of Edinburgh's Awards and this can be started from year 7.

We have now had multiple, successful cohorts at all levels and with growing numbers this has become one of our most popular and rewarding experiences.

Visit [www.dofe.org](http://www.dofe.org) for more information





## THE ARTS

As part of our balanced curriculum, visual and performing arts provides students with opportunities to express creativity, develop presentation skills and confidence with audiences.

Unlike many other schools we highly value the creative subjects and see them as playing a vital role in a child's development.

We welcome you to visit and see our regular performances and to see the incredibly high standard of work on display.

For information on our musical and drama productions please see our school website.

Students performing in Alice in Wonderland as part of our annual school performing arts shows.



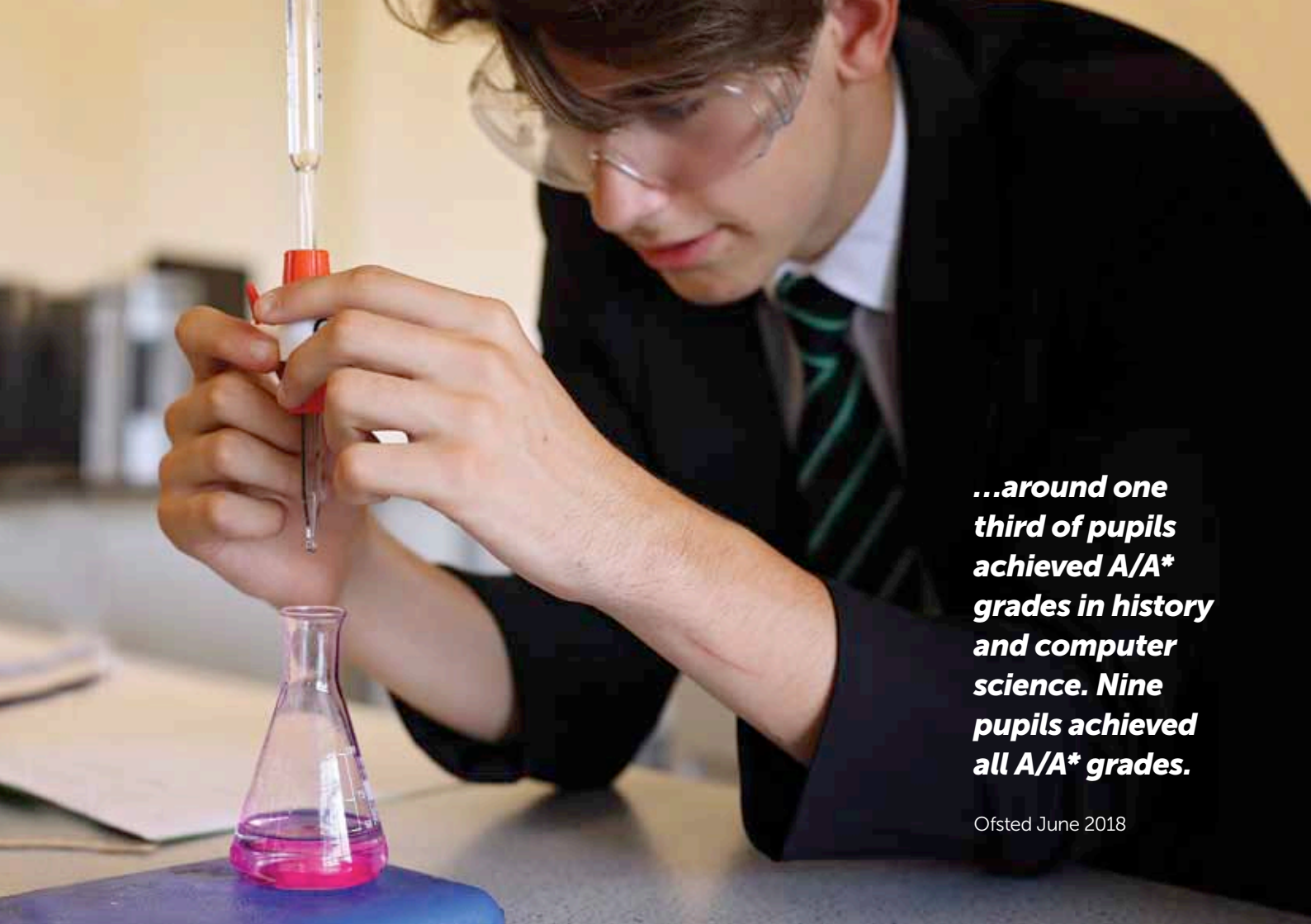
# CHALLENGE

***There were some excellent results in several subjects, revealing substantial progress from pupils' starting points.***

At Wrotham School we have designed a curriculum that challenges every student to experience, enjoy and succeed at the highest level. This starts with us having a strong belief that a child should not be under-estimated. We have established a curriculum that accelerates learning and our students respond with vigour.

We believe strongly in the mastery of basic key skills such as literacy and numeracy and we place these at the foundation of all other learning.

At KS5 we provide information, advice and guidance that not only engages students but encourages them to think beyond their own expectations and consider an open and exciting future.



***...around one third of pupils achieved A/A\* grades in history and computer science. Nine pupils achieved all A/A\* grades.***

Ofsted June 2018







**There is an  
impressive number  
of revision classes  
and after-school  
intervention  
groups which  
pupils can attend**

Ofsted June 2019

## SPORTS

We believe that engagement in sport can broaden the horizons of young people and develop skills that are vital to their futures. As well as ensuring fitness and health is held in high regard, we develop coaching, problem solving and communication skills that reach beyond the discipline studied.

All are encouraged to participate in all sports regardless of gender. We strongly believe this should not place a limit on participation and engagement and have celebrated strong success with our girls and boys football and rugby teams.







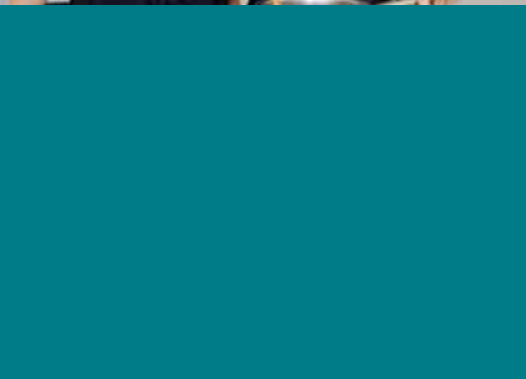


**PUPILS PERFORM VERY STRONGLY IN ENGLISH AND MATHEMATICS...**

**THE STAFF AT THE SCHOOL ARE EXCEPTIONALLY HARD WORKING; INSPIRING AND GUIDE PUPILS TO ACHIEVE THEIR POTENTIAL.**

Ofsted June 2019





**THE SCHOOLS' WORK  
TO PROMOTE PUPILS'  
PERSONAL DEVELOPMENT  
AND WELFARE IS  
OUTSTANDING.**

Ofsted June 2019











**Students taking part in a Camps International visit and working to support local communities in Kenya through their own fundraising activity.**

A photograph of two young students, a girl on the left and a boy on the right, standing outdoors in front of a blurred green background. Both are wearing dark blue school blazers with a crest and the word 'WROTHAM' on the pocket. They are also wearing white collared shirts and green and black striped ties. The girl has blonde hair tied up and is wearing glasses. The boy has dark hair and is smiling slightly.

***The value added to  
students' progress was in  
the top 10% nationally***

Ofsted June 2018



# OPPORTUNITY

Careers advice and guidance is provided from year 7-13 and underpins work in all subjects. Visiting speakers from large companies such as Barclays and BAE systems provide students with a wealth of understanding that helps them form their initial plans for their futures.

As well as providing a full and broad curriculum in years 7-11 we also have a thriving 6th form.

In year 12 and 13 our sixth form gives students the opportunity to study a wide range of subjects at level 3 including A levels and the International Baccalaureate.

We offer support and encouragement that inspires our students to think about their future career choices from apprenticeships to degree courses at Russell group and other top universities.

For more information about our 6th form please visit [wrothamschoolsixthform.wordpress.com](http://wrothamschoolsixthform.wordpress.com)

## EQUALITY

We believe in equality of opportunity and have a strong pastoral programme that encourages tolerance, honesty and fairness. We proudly support the development of all students through passionately ensuring that we promote conversation and education on gender equality, LGBTQ+ issues and the histories of people of colour.

It will come as no surprise that the girls at Wrotham School regularly out perform students at local comprehensive, single sex girls schools in GCSE and A level studies. We proudly dispel the myth that girls don't perform as well at mixed gender schools.





Geography trip to the USA

## **AN EDUCATION THAT BUILDS CHARACTER**

We look to recognise and develop character strengths in our students and staff. It is character that we believe creates interesting and successful people and that alongside academic success is the most important factor in achieving potential.

We aim to develop confident young people who are successful learners and contribute positively to society.

**RESPECT**  
COMMUNICATION  
**INTEGRITY**  
CONFIDENCE  
TEAMWORK  
OPEN-MINDEDNESS  
**MOTIVATION**  
CREATIVITY  
COMPASSION  
**RESILIENCE**





## GRADUATION

Students are rewarded for their personal development, character growth and contribution to the school and local community. This is celebrated annually in our graduation ceremony where students graduate at Bronze, Silver and Gold level based on their work towards our Character Points system, and their academic progress.

## **PASTORAL CARE AND COMMUNICATION**

Wrotham School is built around a strong belief in care, guidance and support for all students, from Year 7 to the Sixth Form.

We have a strong and proactive pastoral team to support your child's progress academically, socially and emotionally as they develop into independent, confident and productive members of our school community.

We work hard to ensure that parents are kept up to date on all of our work and on the progress of your child. As well as meeting regularly we also strive to keep you informed through our online presence and email contact. This means that whatever your concern or query we are able to respond quickly and effectively.

We want parents to join the celebration of success and to join us and the student on this journey.

A large, bold, orange graphic of the number '97' followed by a percentage symbol '%'. The numbers and symbol are rendered in a clean, sans-serif font.

***of parents would recommend  
the school to others. They  
describe it as 'inspirational',  
'supportive', 'fantastically  
encouraging and nurturing'  
and with a 'lovely family feel'.***

Ofsted Parent View Survey 2019



## TEACHING

At Wrotham School our focus is on high quality teaching. We ensure that we recruit and retain the best practitioners, those who are willing to go the extra mile to ensure opportunity and success. All of our staff are qualified in their subject area and are qualified as teaching professionals. This ensures we keep a highly effective team who love to work at the school.





# A PURPOSEFUL BUZZ

***Pupils and students  
sense that staff  
enjoy working at  
the school, which  
certainly contributes  
to the purposeful buzz  
around the school***

Ofsted June 2018



**BE**

# OUTSTANDING

We are very excited about the future of our school and look forward to welcoming you to visit us, see what we do and ask any questions you may have.

**Please check our website  
for information and bookings  
for school tours.**

Visit [wrothamschool.com](http://wrothamschool.com)

***The effectiveness  
of leadership and  
management is  
outstanding.***

Ofsted June 2019



We believe young people achieve their best in an environment where they feel secure, valued and have high self-esteem.

We welcome pupils from far and wide. Here are some of the areas our current students live.

Borough Green

Wrotham

Otford

Seal

Meopham

West Malling

Kings Hill

Wateringbury

Yalding

East Peckham

Sevenoaks

Vigo Village

West Kingsdown

Shipbourne

Plaxtol

Culverstone

Stansted

New Ash Green

Longfield

Istead Rise

Swanley

Larkfield





## NEW FACILITIES

In September 2020 we celebrated the opening of our new 4 court sports hall. The new hall provides cutting edge sports facilities for the students to use and brand new spacious changing rooms to ensure their comfort. In summer 2021 we also refurbished and extended our current music and performing arts facilities by opening a new Gym and performance space and adding an extra music classroom.

## THE FUTURE

In June 2021 we were one of 50 schools who were approved for school rebuilding funding which will ensure our facilities continue to improve in the coming years.

## OFSTED

Read our most recent ofsted report at

[wrothamschool.com/information/ofsted/](http://wrothamschool.com/information/ofsted/)



**THANK YOU TO ALL  
THE TEACHERS AND  
SUPPORT STAFF WHO  
HAVE HELPED.**

**THE EXTRA HOURS  
PUT IN FOR THE  
STUDENTS HAVE  
BEEN PHENOMENAL.**



Borough Green Road, Wrotham  
Sevenoaks, Kent TN15 7RD

**01732 905860 | [office@wrotham.kent.sch.uk](mailto:office@wrotham.kent.sch.uk)**

**Mr M Cater, Headteacher**  
**[mcater@wrotham.kent.sch.uk](mailto:mcater@wrotham.kent.sch.uk)**

**Mr M Wright, Executive Headteacher**  
**[mwright@wrotham.kent.sch.uk](mailto:mwright@wrotham.kent.sch.uk)**

**[www.wrothamschool.com](http://www.wrothamschool.com)**

** [wrothamschool](https://www.facebook.com/wrothamschool)**



Company No: 07662701  
Registered in England and Wales



Wrotham School is part of the Character Education Trust, a Trust of schools that focus on helping students develop strong character strengths, reach their academic potential and discover where they excel.

The academies in the trust are aligned by a commitment to: prioritising academic excellence, high expectations and the development of character; being inclusive; developing the highest quality of teaching and learning; providing valuable progression routes that will give young people choices in adult life and allow them to be well qualified to achieve success and well-being.

**Matthew Wright**  
**Executive Headteacher & Trust Leader**

**[www.charactereducationtrust.org](http://www.charactereducationtrust.org)**